



Duo Cloud getting started guide

Version 2.0

February 10, 2020

What's in this guide?

Howdy! In this guide, you'll find instructions on how to:

1. Overview;
2. Generate the Application Program Interface (API) Credentials; and
3. Configure Duo in Expel Workbench™.

Step 1 — Overview

This document will provide instructions on how to integrate the Duo application with Expel. What you need to get started:

- A. **Duo administrator account** with **Owner** role
- B. **Duo Admin APIs enabled** as these are not enabled by default (Reference <https://duo.com/docs/adminapi>)

Step 2 — Generate API credentials

In order to integrate the technology with Expel, we need to create secure credentials to the API. Expel may be able to generate the API credentials for you, or you can follow the steps below. If you are unsure, please reach out to your Expel *Customer Success Engineer*, or email customerhealth@expel.io.

- A. **Log in** to the Duo admin portal as an **Owner** (<https://admin.duosecurity.com>)
- B. Navigate to **Applications > Protect an Application** (Figure 1)

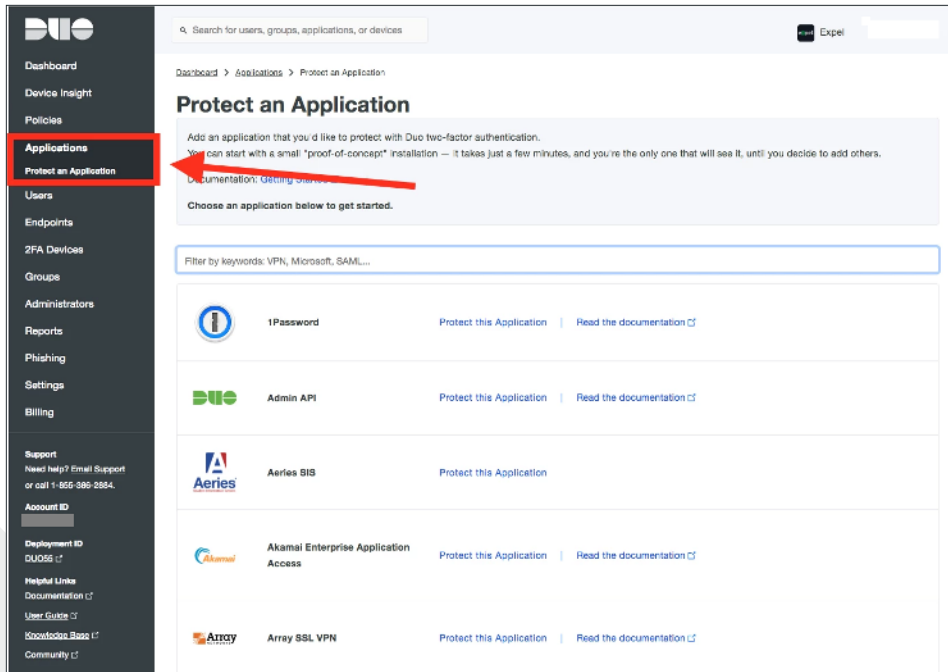


Figure 1

C. Click **Protect this Application** for the Duo Admin API (Figure 2)

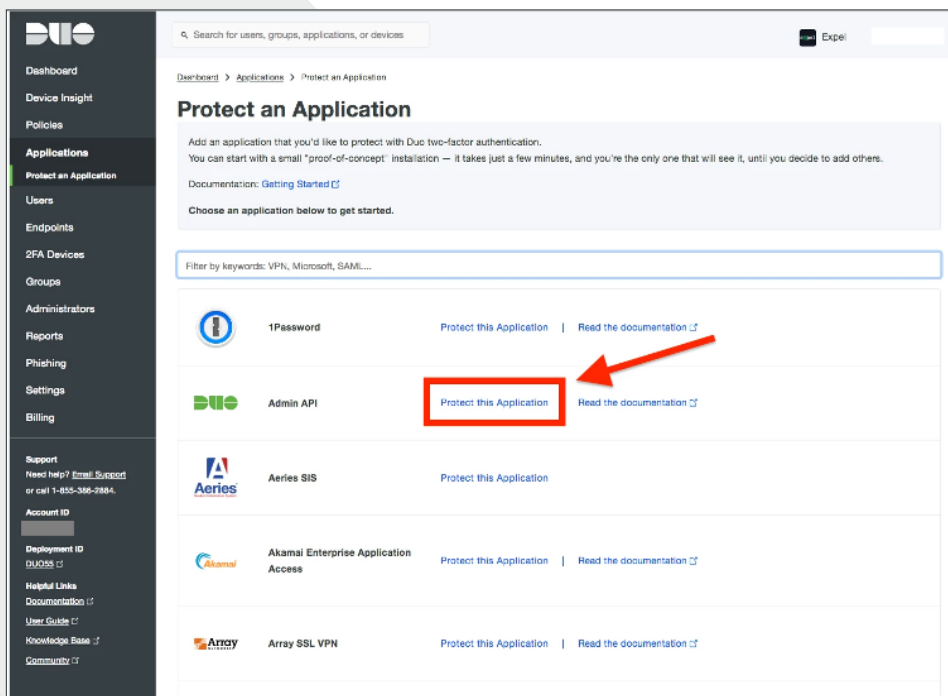


Figure 2

- D. On the next screen, **copy and save** the **Integration key**, **Secret key**, and **API hostname** for this application. These are the credentials Expel needs to connect to the Duo service. **These will not be shown again, so please save them now** (Figure 3)

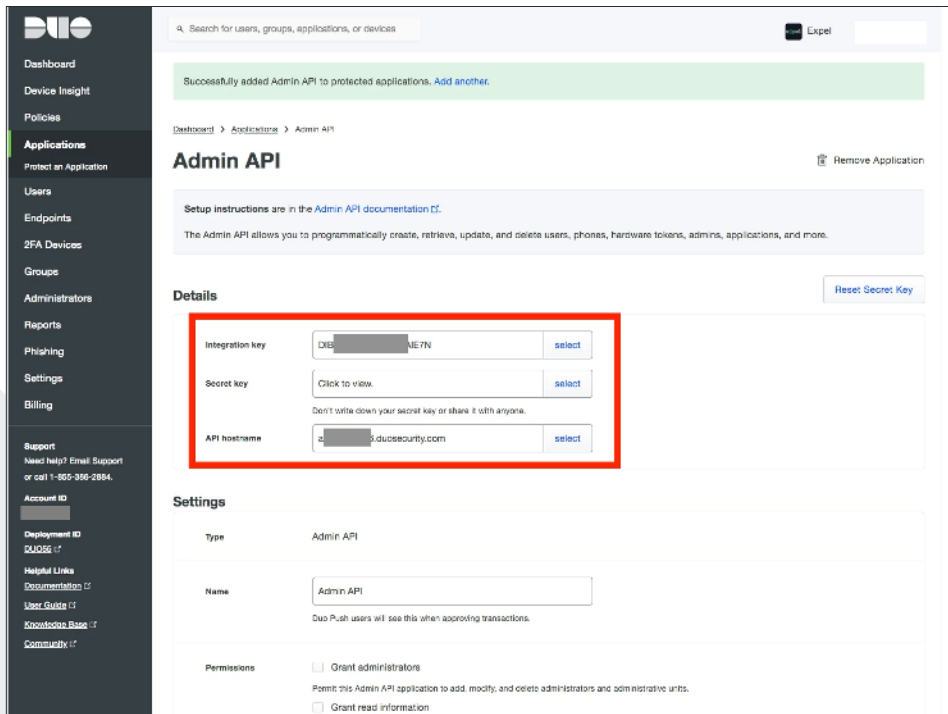


Figure 3

E. In the **Settings** section, name the application something descriptive (we recommend “Expel API”). See Figure 4

Settings

Type: Admin API

Name: Expel API
Duo Push users will see this when approving transactions.

Permissions:

- Grant administrators
Permit this Admin API application to add, modify, and delete administrators and administrative units.
- Grant read information
Permit this Admin API application to read information and statistics generally used for reporting purposes.
- Grant applications
Permit this Admin API application to add, modify, and delete applications.
- Grant settings
Permit this Admin API application to read and update global account settings.
- Grant read log
Permit this Admin API application to read logs.
- Grant read resource
Permit this Admin API application to read resources such as users, phones, and hardware tokens.
- Grant write resource
Permit this Admin API application to add, modify, and delete resources such as users, phones, and hardware tokens.

Notes:
For internal use.

[Save Changes](#)

Figure 4

F. Make sure to check the following required permissions (See Figures 4 and 5):

Permission	What Expel does with it
Grant read log	Read audit logs for security monitoring
Grant read resource	Read user and groups information and enrich events with this context

Figure 5

Step 3 – Configure the technology in Workbench

Now that we have access and have noted the credentials, we can integrate Duo with Expel.

Register Duo in Expel Workbench

- A. In a new browser tab, log into <https://workbench.expel.io>
- B. Enter Security Code from Google Authenticator (two-factor authentication)
- C. On the console page, navigate to **Settings** and click **Security Devices**
- D. At the top right of the page, select **Add Security Device** (Figure 6)

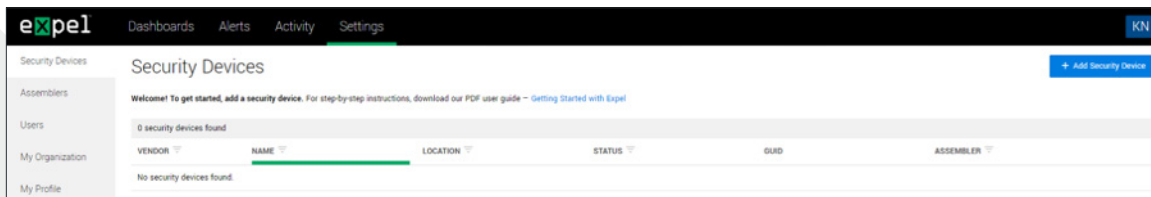


Figure 6

- E. Search for and select your technology (Figure 7)

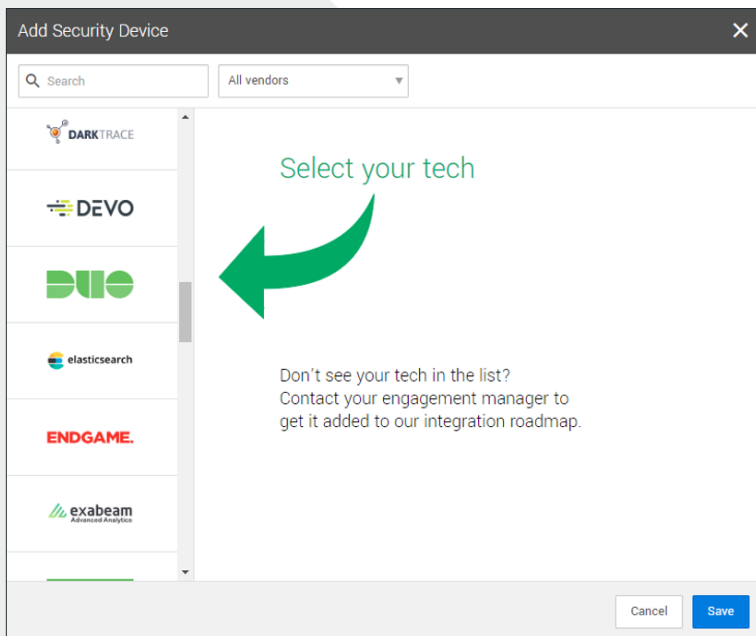


Figure 7

F. Refer to Figure 8 for Steps G-L

Figure 8

- G. Select an **Assembler** from the drop down (Choose the **Assembler** you set up in *Step 2* of the [Getting Started with Expel](#) guide)
- H. Enter Assembler **Name** and **Location**
- I. Enter the **Integration key** from *Step 2D*
- J. Enter the **API Hostname** from *Step 2D*
- K. Enter the **Secret Key** from *Step 2D*
- L. Select **Save**
- M. After a few minutes, refresh the **Security Devices** page and you should see your device status reporting as *Healthy*, or if there is an issue, it will provide more details of what the issue may be
- N. To check and see if alerts are coming through, navigate to **Alerts** on the console page. Click the icon in the upper right to switch to grid view, then check the list for Duo alerts

That's it! Give yourself a pat on the back — you're done!

If you have any issues, concerns, questions or feedback, please don't hesitate to contact Expel at devicehealth@expel.io.